



# Morecambe Offshore Windfarm: Generation Assets Environmental Statement

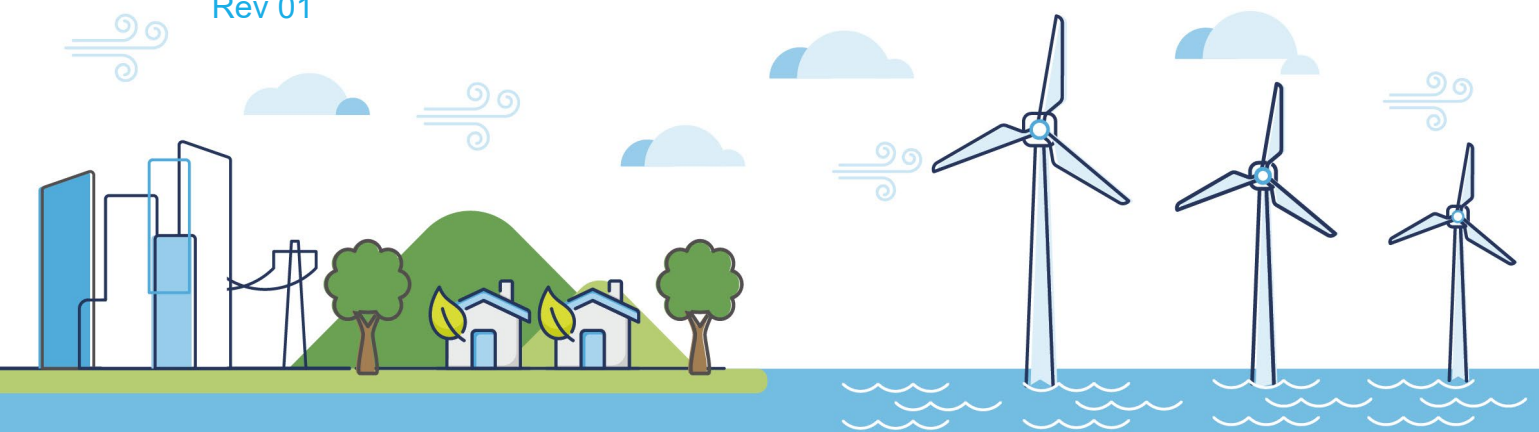
## Volume 5

### Chapter 18 SLVIA Figures (Part 9 of 34)

PINS Document Reference: 5.3.18.9

APFP Regulation: 5(2)(a)

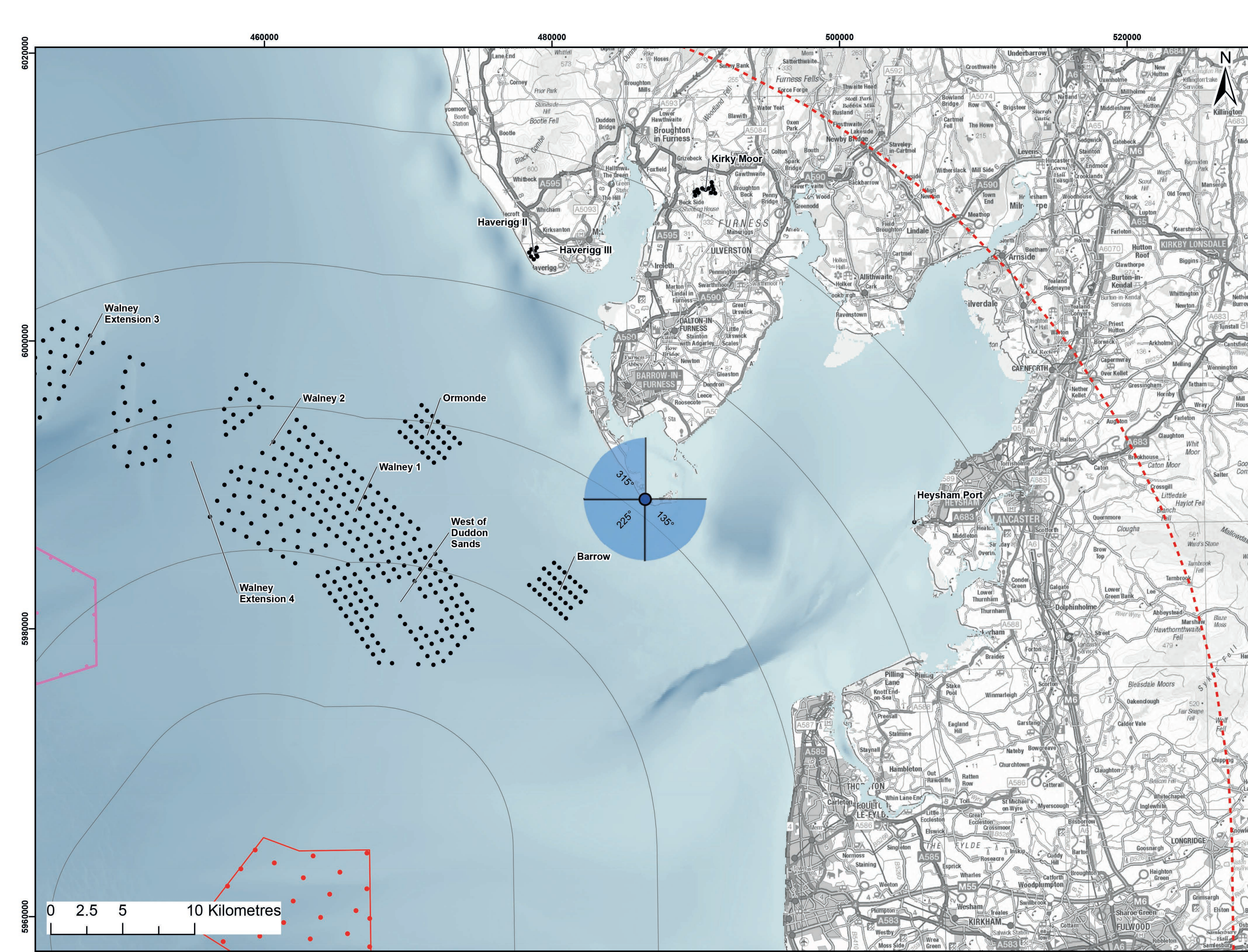
Rev 01



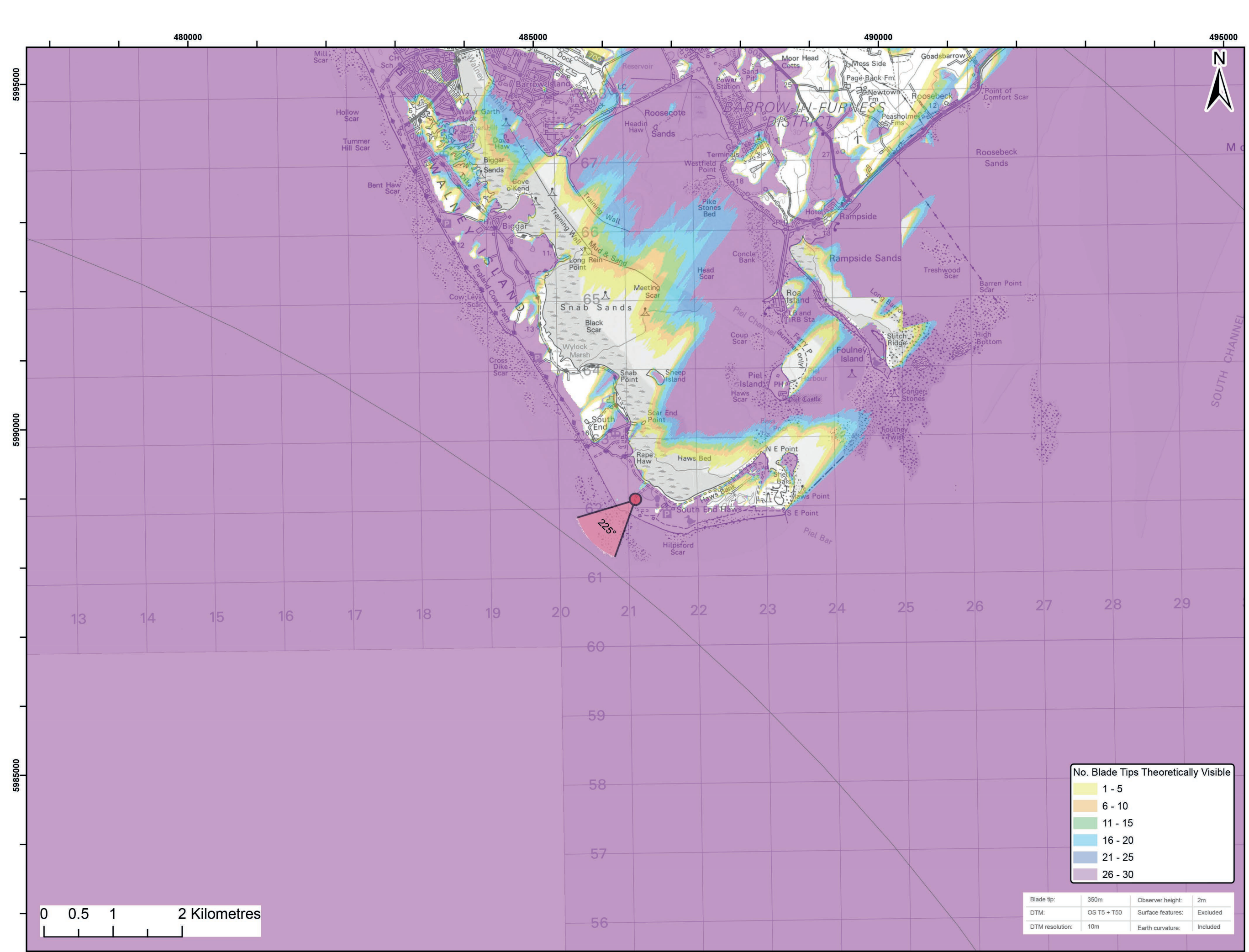
## Document History

<b>Doc No</b>	MOR001-FLO-CON-ENV-FIG-1180	<b>Rev</b>	01
<b>Alt Doc No</b>	PC1165-RHD-ES-XX-DG-Z-0018		
<b>Document Status</b>	Approved for Use	<b>Doc Date</b>	May 2024
<b>PINS Doc Ref</b>	5.3.18.9	<b>APFP Ref</b>	5(2)(a)

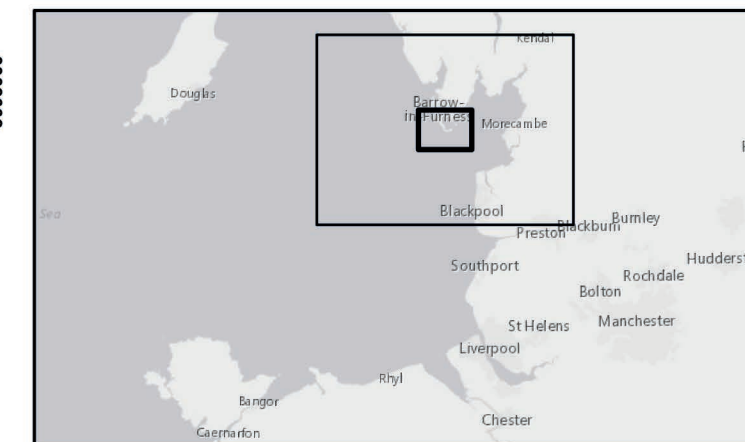
<b>Rev</b>	<b>Date</b>	<b>Doc Status</b>	<b>Originator</b>	<b>Reviewer</b>	<b>Approver</b>	<b>Modifications</b>
01	May 2024	Approved for Use	Royal HaskoningDHV	Morecambe Offshore Windfarm Ltd	Morecambe Offshore Windfarm Ltd	n/a



Viewpoint Location Plan Baseline Panorama (90 Degree View)  
Scale: 1:200,000



Viewpoint Location Plan (53.5 Degree View)  
Scale: 1:50,000



**Legend:**

<span style="color: red;">●</span> Morecambe Offshore Wind Farm - Assumed WTG locations (30 x BT 310m(HAT))	<span style="color: black;">●</span> Cumulative Wind Farms Status
<span style="color: blue;">▼</span> 90 Degree Field of View	<span style="color: black;">●</span> Operational
<span style="color: red;">▼</span> 53.5 Degree Field of View	<span style="color: purple;">●</span> Under Construction
<span style="border: 1px solid black; border-radius: 50%; width: 10px; height: 10px; display: inline-block;"></span> 10km Radii	<span style="color: green;">●</span> Consented
<span style="border: 2px dashed red; width: 10px; height: 10px; display: inline-block;"></span> 60km Study Area	<span style="color: blue;">●</span> Application
<span style="border: 1px solid red; width: 10px; height: 10px; display: inline-block;"></span> Morecambe Offshore Windfarm Site	<span style="color: orange;">●</span> Scoping
	<span style="color: pink;">●</span> Pre-Application

© Crown copyright and database rights (2023) Ordnance Survey 0100031673.

Report:  
Morecambe Offshore Windfarm: Generation Assets Environmental Statement

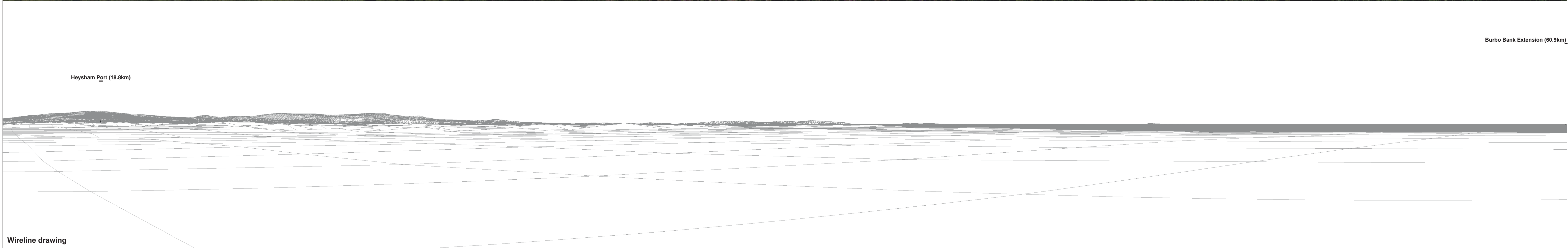
Title:  
Viewpoint 6:  
South Walney Nature Reserve

Figure: 18.29a Drawing No: 211609

Revision:	Date:	Drawn:	Checked:	Size:	Scale:
P02	25/09/2023	RA	SM	A3	1:50,000

Co-ordinate system: WGS 1984 UTM Zone 30N





OS reference: 321106 E 462123 N  
 Eye level: 9.51 m AOD  
 Direction of view: 135°  
 Nearest turbine: 31.319 km

Horizontal field of view: 90° (cylindrical projection)  
 Principal distance: 522 mm

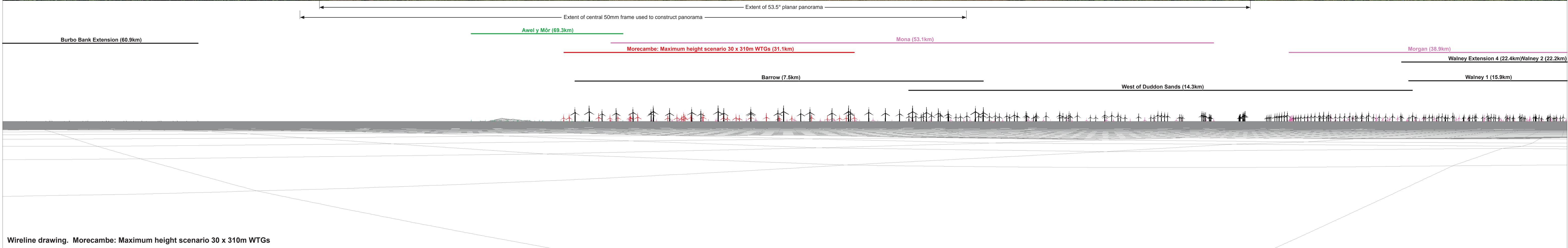
Camera: Canon EOS 6D  
 Lens: EF50mm f/1.4 USM  
 Camera height: 1.5 m AGL  
 Date and time: 23/06/2022, 07:04

Figure: 18:29b  
 Viewpoint 6: South Walney Nature Reserve



Baseline photograph

This image provides landscape and visual context only



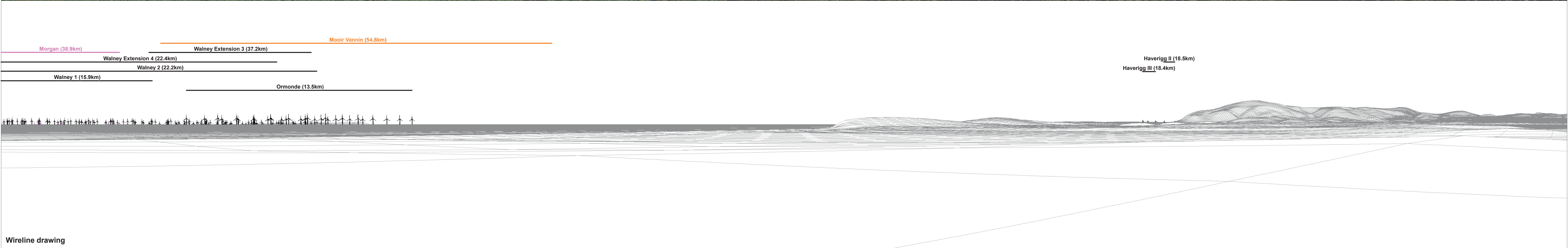
OS reference:	321106 E 462123 N	Horizontal field of view:	90° (cylindrical projection)	Camera:	Canon EOS 6D
Eye level:	9.51 m AOD	Principal distance:	522 mm	Lens:	EF50mm f/1.4 USM
Direction of view:	225°			Camera height:	1.5 m AGL
Nearest turbine:	31.319 km			Date and time:	23/06/2022, 07:04

Figure: 18:29c  
Viewpoint 6: South Walney Nature Reserve



Baseline photograph

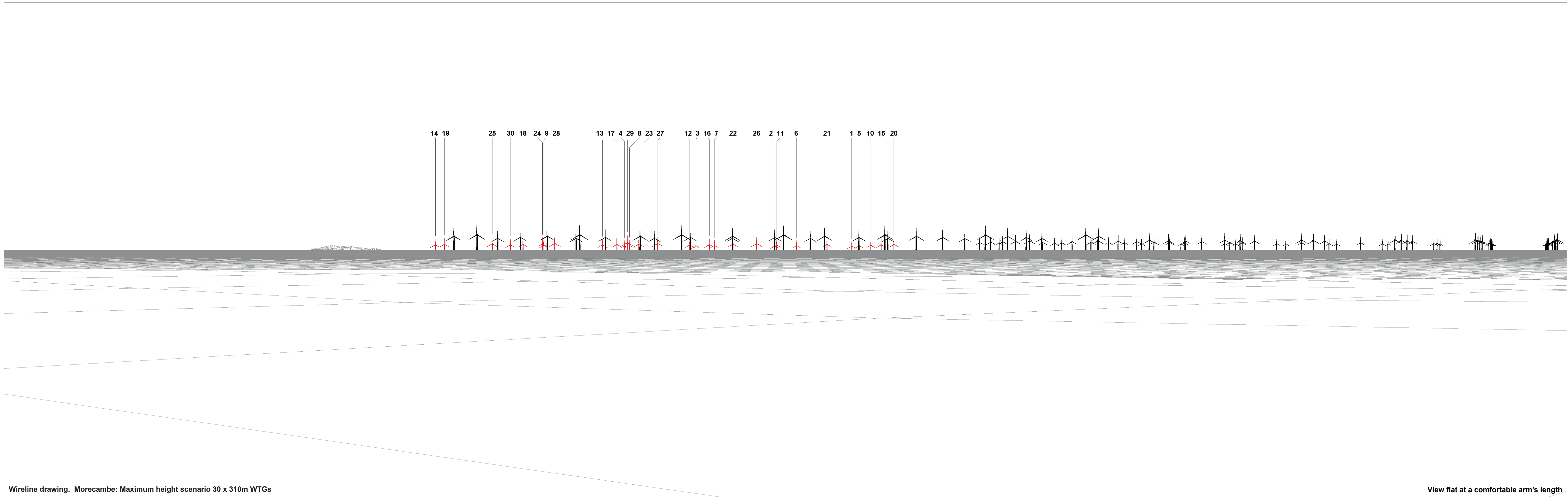
This image provides landscape and visual context only



Wireline drawing

OS reference:	321106 E 462123 N	Horizontal field of view:	90° (cylindrical projection)	Camera:	Canon EOS 6D
Eye level:	9.51 m AOD	Principal distance:	522 mm	Lens:	EF50mm f/1.4 USM
Direction of view:	315°			Camera height:	1.5 m AGL
Nearest turbine:	31.319 km			Date and time:	23/06/2022, 07:04

Figure: 18:29d  
Viewpoint 6: South Walney Nature Reserve



Wireline drawing. Morecambe: Maximum height scenario 30 x 310m WTGs

View flat at a comfortable arm's length

<b>OS reference:</b>	321106 E 462123 N	<b>Horizontal field of view:</b>	53.5° (planar projection)	<b>Camera:</b>	Canon EOS 6D
<b>Eye level:</b>	9.51 m AOD	<b>Principal distance:</b>	812.5 mm	<b>Lens:</b>	EF50mm f/1.4 USM
<b>Direction of view:</b>	225°	<b>Paper size:</b>	841 x 297 mm (half A1)	<b>Camera height:</b>	1.5 m AGL
<b>Nearest turbine:</b>	31.319 km	<b>Correct printed image size:</b>	820 x 260 mm	<b>Date and time:</b>	23/06/2022, 07:04

Figure: 18:29e  
Viewpoint 6: South Walney Nature Reserve



Baseline Photograph (offshore operational turbines have been rendered in this view)

View flat at a comfortable arm's length

<b>OS reference:</b>	321106 E 462123 N	<b>Horizontal field of view:</b>	53.5° (planar projection)	<b>Camera:</b>	Canon EOS 6D
<b>Eye level:</b>	9.51 m AOD	<b>Principal distance</b>	812.5 mm	<b>Lens:</b>	EF50mm f/1.4 USM
<b>Direction of view:</b>	225°	<b>Paper size:</b>	841 x 297 mm (half A1)	<b>Camera height:</b>	1.5 m AGL
<b>Nearest turbine:</b>	31.319 km	<b>Correct printed image size:</b>	820 x 260 mm	<b>Date and time:</b>	23/06/2022, 07:04

**Figure: 18:29f**  
**Viewpoint 6: South Walney Nature Reserve**





Photomontage

View flat at a comfortable arm's length

<b>OS reference:</b> 321106 E 462123 N	<b>Horizontal field of view:</b> 53.5° (planar projection)	<b>Camera:</b> Canon EOS 6D	
<b>Eye level:</b> 9.51 m AOD	<b>Principal distance:</b> 812.5 mm	<b>Lens:</b> EF50mm f/1.4 USM	
<b>Direction of view:</b> 225°	<b>Paper size:</b> 841 x 297 mm (half A1)	<b>Camera height:</b> 1.5 m AGL	
<b>Nearest turbine:</b> 31.319 km	<b>Correct printed image size:</b> 820 x 260 mm	<b>Date and time:</b> 23/06/2022, 07:04	<b>Figure: 18:29g</b> <b>Viewpoint 6: South Walney Nature Reserve</b>